



Prifysgol Cymru
Y Drindod Dewi Sant
University of Wales
Trinity Saint David

Introduction to the UWTSD RDP 'Researcher Development Programme'

RIES Team:

Dr Matt Briggs

Dr Catriona Ryan

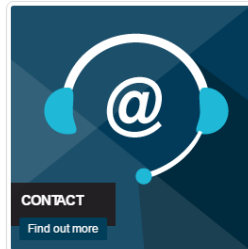
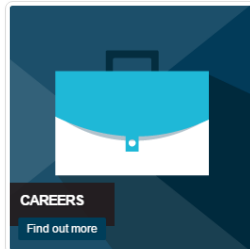
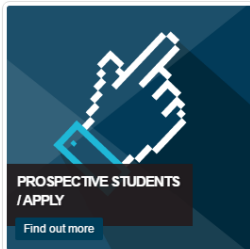
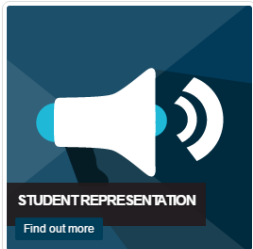
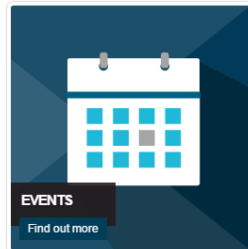
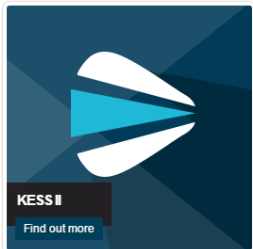
Nicola Powell

Trawsnewid Addysg; Trawsnewid Bywydau
Transforming Education; Transforming Lives



www.uwtسد.ac.uk

UWTSD RDP



**Newly launched for
2016-17**

<http://www.uwtsd.ac.uk/rdp/>

What's included in the RDP?

- **On-campus events throughout the year**
 - Postgraduate Engagement Fair.
 - Interdisciplinary Research Conference
 - Research Festival
 - Three Minute Thesis competition
 - School / Faculty events
 - Careers event
- **RDP Online**
 - Monthly webinars
- **Vitae Online Planner**
 - Individual accounts to allow you to plan, record and manage your research training
 - Measured in RDP Units (30 throughout a PhD & 15 for a Mphil)

What's included in the RDP?

- **More general professional support**
 - student representation
 - advice on and coordination of research funding
 - support for researcher development opportunities
 - a hub for information and guidance for all postgraduate students working towards a research degree and for staff in academic schools and faculties.

**More to come throughout your studies
Please tell us what you would like!**

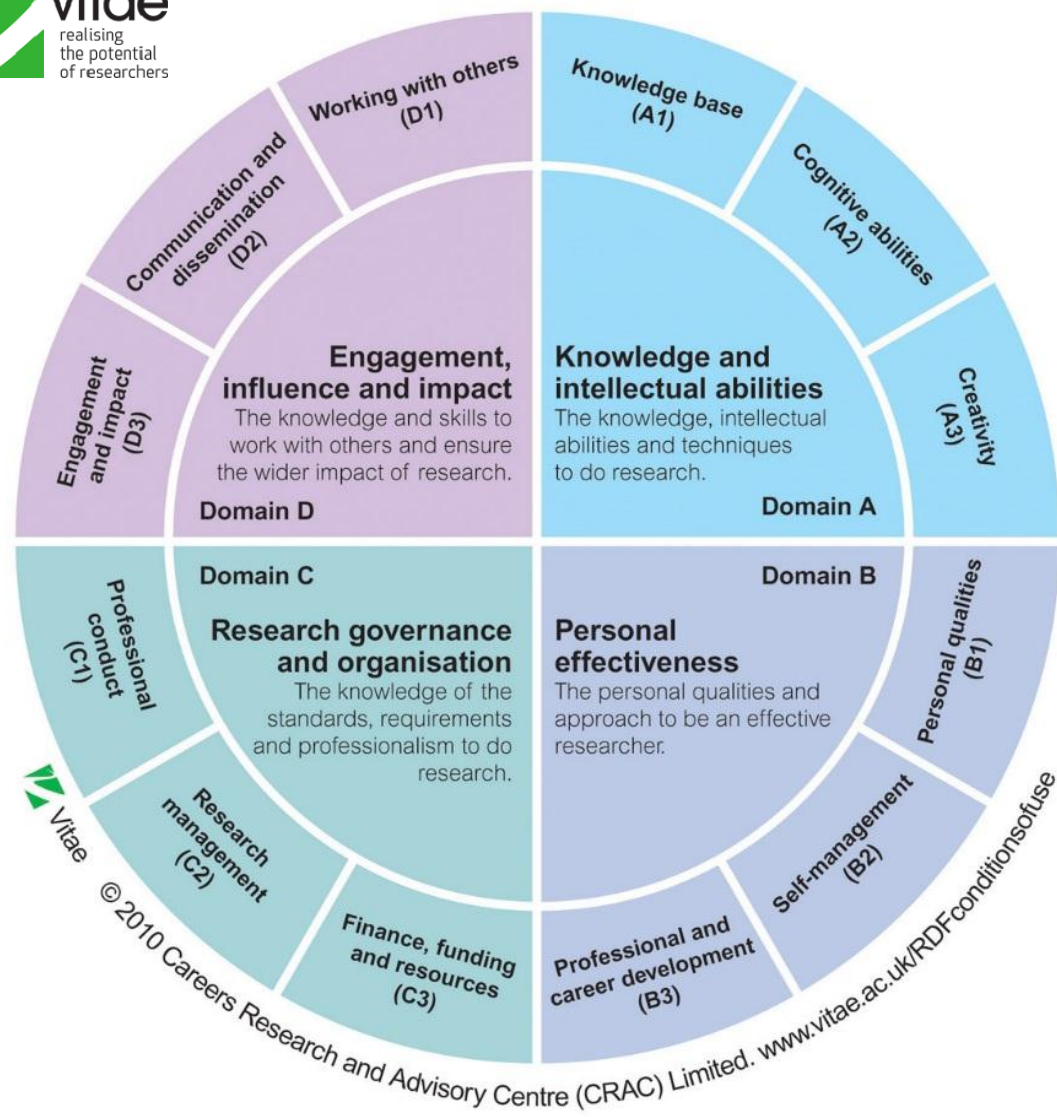
Why should I get involved in the RDP?

- **To become more effective researchers and to succeed in your future careers you need to develop a range of professional skills, such as:**
 - Developing your knowledge and intellectual abilities
 - Public engagement
 - Writing and presentation skills
 - Project management
 - Organisational skills
 - Working with others
 - Research integrity
 - Understanding HE environment

It's not *just* about the thesis.....

- **RDP activity improves academic performance and helps students to complete their degrees more rapidly.**
- **The RDP also offers you the potential to enrich your postgraduate experience by helping you to:**
 - develop knowledge about yourself and how you function, both within an academic context and more generally,
 - help improve your ability to relate your learning and skills to the needs and interests of employers.

These are identified by the Vitae Researcher Development Framework



Vitae Researcher Development Framework



UWTSD RDP

How many courses should I attend?

- **The University's normal recommendation is that PhD students should seek to attain 30 units of training over the course of their studies, with 15 for MPhil**
- **Split between structured training and informal 'on-the-job' development.**
- 10 units of structured training in year 1
- 10 units of structured training over years 2 and 3
- 10 units of 'on-the-job' development' over years 2 and 3
- (half or this for M.Phil. students)

Structured Training

- **For example:**
- Courses from the UWTSD *RDP Online* program
- Courses run by individual UWTSD Schools
- Other UWTSD courses: e.g. those run by Library and Learning Services
- Vitae programme courses
- Training events delivered by professional bodies and Research Councils
- Training courses and workshops run by other Higher Education Institutions
- Any other appropriate external courses

Developmental or 'On-the-Job' training

- **For Example:**
- Presenting a conference paper
- Publishing a journal article
- Contributing to the organising an research event
- Acting as a student rep
- Lecturing activities
- Consulting with a company / external body
- Attending a careers fair
- Acting as a research assistant
- Entering the 3 Minute Thesis competition
- Writing a research funding proposal

- Anything else agreed with your supervisor (please let RIES know so we can update this list.....)

Indicative RDP Units

Year 1	Units	Year 2	Units	Year 3	Units
RDP online	1	RDP online	1	RDP online	1
RDP online	1	RDP online	1	RDP online	1
RDP online	1	RDP online	1	RDP online	1
Research Festival Day 1	2	RDP online	1	RDP online	1
Research Festival Day 2	2	Three Minute Thesis Competition	1	Publication	1
Research Festival Day 3	2	Organise research seminar	1	Conference paper	1
Postgraduate conference paper	1	Research Festival 1 Day	2	Teaching	1
		Faculty training	1	Careers fair	1
		Vitae event	1	Editorial work on PGR researcher	1
Sub total	10		10		10
Grand Total	30				

What's the tariff for RDP Units?

- **Formal training**
- **This includes activities such as attending a full-day course on the UWTSD Researcher Development Programme**
- Each half day (or part of) will count as 1 RDP Unit.
- For example:
 - A workshop with sessions before and after lunch, such as the Summer Research Festival would count for 2 units, and for a half-day session, 1 unit
 - A single seminar (for example a faculty event) would be worth 1 Unit
 - All RDP Online webinars are worth 1 Unit

What's the tariff for RDP Units?

- **Informal 'on-the-job' development**
- **Each discrete 'on-the-job' activity is worth 1 RDP Unit regardless of the time taken to complete it.**
- This may seem like a lot of work, but we recommend that you plan your 10 informal RDP development activities over the second and third years of a full-time PhD (and pro-rata for other modes of study).
- The aim of this is to encourage you to engage in the sort of professional activities that will enhance your experience and make you an outstanding researcher, with excellent prospects once you have completed your studies.



RDP Online

- **Series of webinars covering key RDF topics**
- 2 hours – very interactive
- Utilising Skype for Business
- Available free on any supported device through your Office 365 account
- Attend the webinar from any location
- Recommend that you take 10 sessions over studies (5 for Mphil)

- **How to join?**
- Register in advance
- Receive email invitation
- Click link to join at scheduled time
- Training and support available



<http://www.uwtsd.ac.uk/rdp/rdp-online-/>

Professional development planning for researchers online course (PDP ROC)



This online course has been developed for researchers who want to make the most of opportunities and create new ones, covers all stages in the process. It's suitable for researchers at any career stage and can be used together with UWTSD's RDP and RDP online events and resources.

All six modules will count as 1 RDP Unit

PDP ROC

- **MODULE 1 Introducing PDP for researchers.**
- Explore the meaning of professional development planning in your own professional area. You will be introduced to the Vitae Researcher Development Framework (RDF)
- **MODULE 2 Analyse your experience and expertise.**
- Consider what broader expertise and experiences you are developing through your research activities
- **MODULE 3 Collect and organise your evidence.**
- You will be encouraged to take a systematic approach to gathering evidence of your achievements.
- **MODULE 4 Select and prioritise areas for further development.**
- You will identify expertise areas for further development and prioritise your development in the context of broader goals
- **MODULE 5 Plan and achieve your professional development goals.**
- You will set development goals and find and select opportunities for development.
- **MODULE 6 Professional Development Planning for Researchers:**
- You will provide Vitae with formative feedback on the course Professional Development Planning for Researchers.

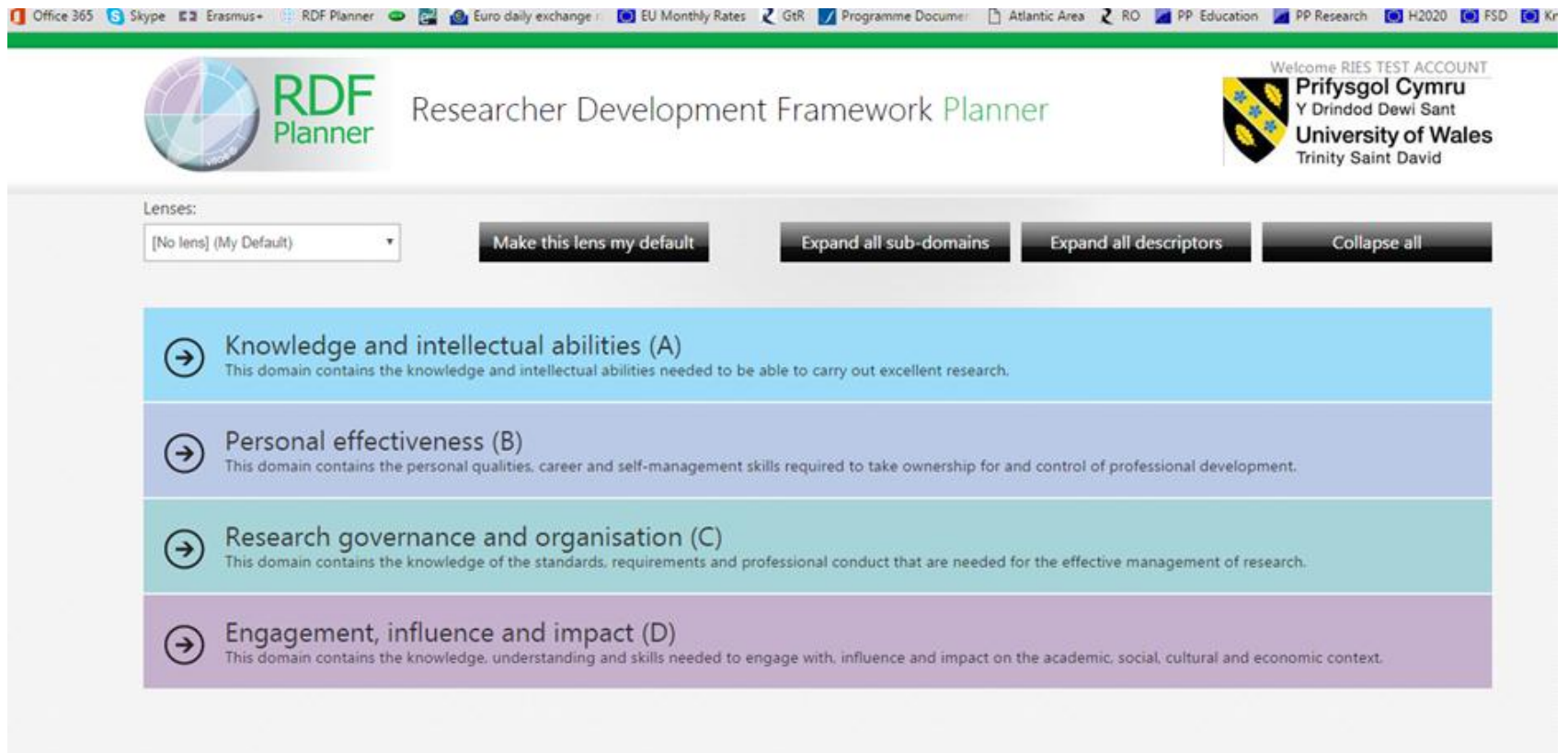
How do I record and plan my RDP?

- **As a UWTSD student you can make use of Vitae's Researcher Development Framework Online Planning Tool**
- The planner underpins the UWTSD RDP and allows you to simply and easily take control of your professional and career development to:
 - Identify your expertise and capabilities
 - Plan your career
 - Focus your training effort where it is needed most
 - Record and showcase your achievements, recoding your UWTSD RDP Units
 - Monitor your progress
 - Use in professional development review meetings with your supervisory team

Access it from the UWTSD RDP website: <https://rdfplanner.vitae.ac.uk/>

RDF Planning Tool

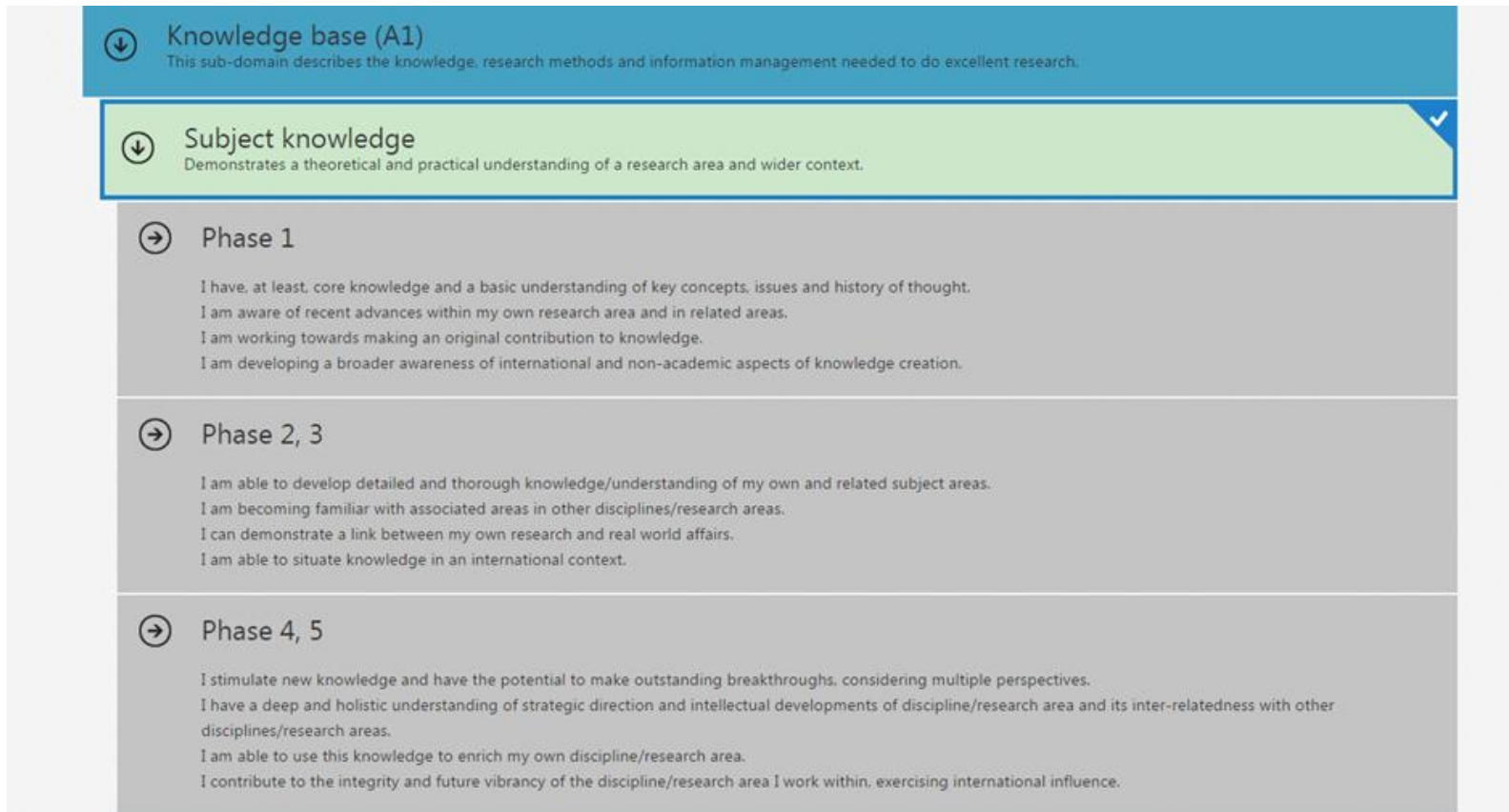
- Four domains

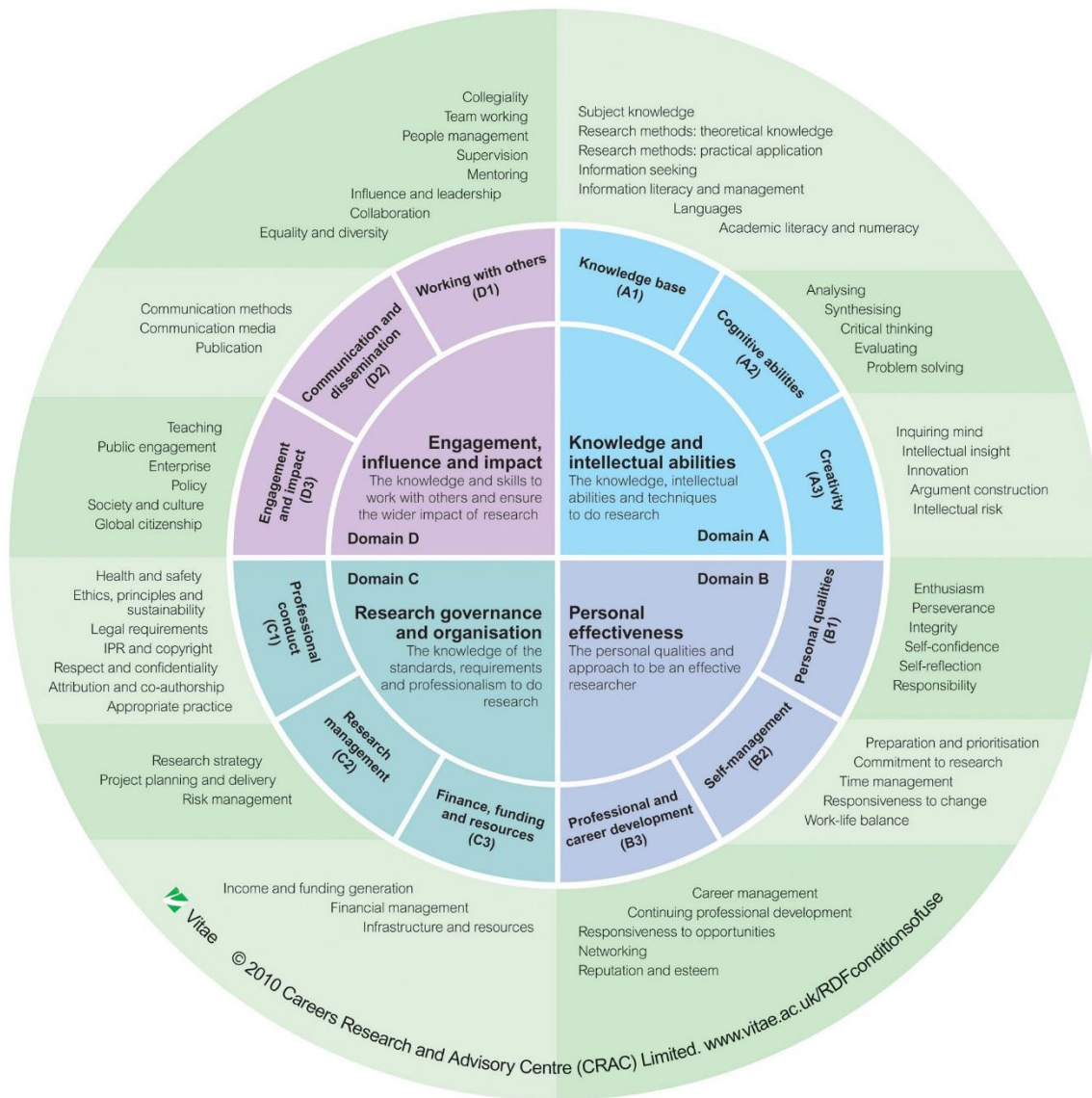


The screenshot shows the RDF Planning Tool interface. At the top, there is a browser tab bar with various tabs open, including 'Office 365', 'Skype', 'Erasmus+', 'RDF Planner', 'Euro daily exchange', 'EU Monthly Rates', 'GtR', 'Programme Docume', 'Atlantic Area', 'RO', 'PP Education', 'PP Research', 'H2020', 'FSD', and 'Kr'. Below the browser bar, the RDF Planner logo is on the left, and the University of Wales Trinity Saint David logo is on the right. The main content area features a 'Lenses:' dropdown menu set to '[No lens] (My Default)'. To the right of the dropdown are four buttons: 'Make this lens my default', 'Expand all sub-domains', 'Expand all descriptors', and 'Collapse all'. Below these buttons are four domain cards, each with a right-pointing arrow icon and a description:

- Knowledge and intellectual abilities (A)**
This domain contains the knowledge and intellectual abilities needed to be able to carry out excellent research.
- Personal effectiveness (B)**
This domain contains the personal qualities, career and self-management skills required to take ownership for and control of professional development.
- Research governance and organisation (C)**
This domain contains the knowledge of the standards, requirements and professional conduct that are needed for the effective management of research.
- Engagement, influence and impact (D)**
This domain contains the knowledge, understanding and skills needed to engage with, influence and impact on the academic, social, cultural and economic context.

- Within each of the Domains there are three **Subdomains**.
 - These Subdomains are further divided into **Descriptors**.
 - There **are 63 Descriptors** in total and each one is comprised of up to **five phases of development**





You should reflect and consult with your supervisor about what phase you are currently in in each subdomain, and address the knowledge, skills, competencies and behaviours of the next phase up. Here is an example of

- Domain A (Knowledge and Intellectual Abilities)
- Subdomain A1 (Subject Knowledge)
- Phase 2 and 3 (detailed knowledge of subject area, familiar with associated disciplines, can link my research to real-world affairs, can situate my work in an international context)

Phase 2, 3

I am able to develop detailed and thorough knowledge/understanding of my own and related subject areas.
I am becoming familiar with associated areas in other disciplines/research areas.
I can demonstrate a link between my own research and real world affairs.
I am able to situate knowledge in an international context.

Phase achieved? **No** Evidence: Added(0) Actions: Added(0) [Access training and support in this area](#)

Actions [Add new action](#)

Evidence [Add new evidence](#)

The tool will allow you to

- access training and support materials
- plan a detailed course of action with your supervisor (such as what opportunities you should participate in through the UWTSD RDP or through research focused tasks directly related to your research project and writing)
- record evidence of your progress and generate reports for each.

Phase 1

Action for: Phase 2, 3

What are your objectives?

How will you measure progress and achievement?

Phases

- Phase 1
- Phase 2, 3
- Phase 4, 5

Target date (dd/mm/yyyy)

Completion date (dd/mm/yyyy)

Completed?

Save Save and close Cancel

Phase 4, 5



Researcher Development Framework Planner

Welcome Matt Briggs



User reports

My actions

My evidence

My action plan

My completed actions
with evidence

Evidence useful for CV

Dashboard



myRDF - Actions report - Matt Briggs

This report provides an overview of the actions you have input by descriptor and phase and gives the status of each action. It includes the dates the actions were created, the target for completion and actual completion. It highlights actions that are overdue.

Completed actions are in green Open actions are in Blue Overdue actions are in Red

	Date created	What are your objectives?	How will you measure progress and achievement?	Target date	Completed	Completion date
Knowledge and intellectual abilities (A)						
Knowledge base (A1)						
Subject knowledge						
Phase 1						
	09/02/15	<p>Review current literature</p> <p>The first step is to engage in a critical (analytic) review of the current literature, considering the appropriateness of the approach or paradigm employed, the rigour of the research design, the effectiveness of the techniques used and the resulting quality of the results yielded.</p>	<p>Draft Lit review chapter in PhD approved by supervisor.</p> <p>Attend Grad School session in Feb.</p>	31/12/14	Overdue	
	09/02/15	<p>Explore other discipline areas</p> <p>Explore the 'ideas in currency' in related discipline areas, in professions that depend on or are informed by your subject, and adventure into the literature on key topics produced in countries that may adhere to a different philosophy than those you are comfortable with. Do</p>	<p>Attend interdisciplinary research seminars in other faculties.</p> <p>identify and attend conference in subject area.</p>	31/03/15	Overdue	

How do I set up an account?

- **Accessing the tool is quick and easy.**
- As a first step you will need to register with Vitae as a UWTS D PGR student on their website.
- Simply use your @uwtsd.ac.uk email and you will have access to all Vitae's training resources.
- **You can then either:**
 - Register an account on the RDF Planning Tool. This will be verified by Nicola Powell
 - Ask Nicola to set you up an account