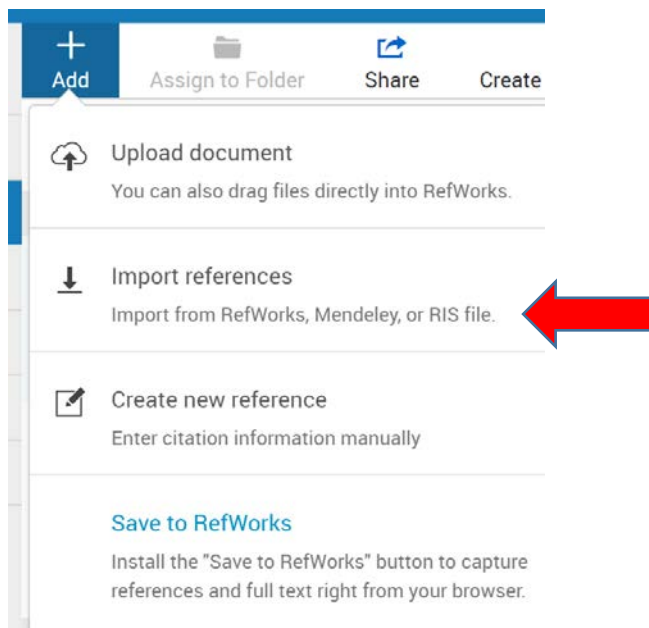


Allgludo dyfyniadau o Mendeley i RefWorks

Dilynwch y camau hyn i fewngludo eich dyfyniadau'n hawdd o Mendeley i'ch cyfrif RefWorks:

1. Yn **Mendeley** amlygwch y dyfyniadau rydych chi eisiau eu trosglwyddo
2. Ewch i **File > Export**
3. Cadwch y rhain gyda'ch 'Downloads' fel **Ffeil RIS**
4. Mewngofnodwch i **RefWorks**
5. Cliciwch ar + a dewis **Import References**



6. Dewiswch '**Import from a file**'

Import from another reference manager



If we don't support importing from your reference manager yet, try exporting your references and import the file.

Import from a file

Need to import from a file, no problem. RefWorks supports hundreds of formats including RIS, BibTeX, and PubMed. Drag and drop the file into RefWorks (into the box below), or use the link to "select a file from your computer" and upload it.

+ Drop file here or [select a file from your computer](#)

7. Nawr gallwch fewngludo'r ffeil RIS y gwnaethoch ei chadw'n flaenorol gyda'ch 'Downloads'.

***Ni fydd cyfrifiaduron rhwydwaith (PCs) y Drindod Dewi Sant yn caniatáu i chi lawrlwytho meddalwedd Mendeley oherwydd cyfyngiadau trwyddedu ond gallwch ei gosod fel ffeil dros dro ar liniadur YDDS, er mwyn allgludo eich dyfyniadau i RefWorks.**